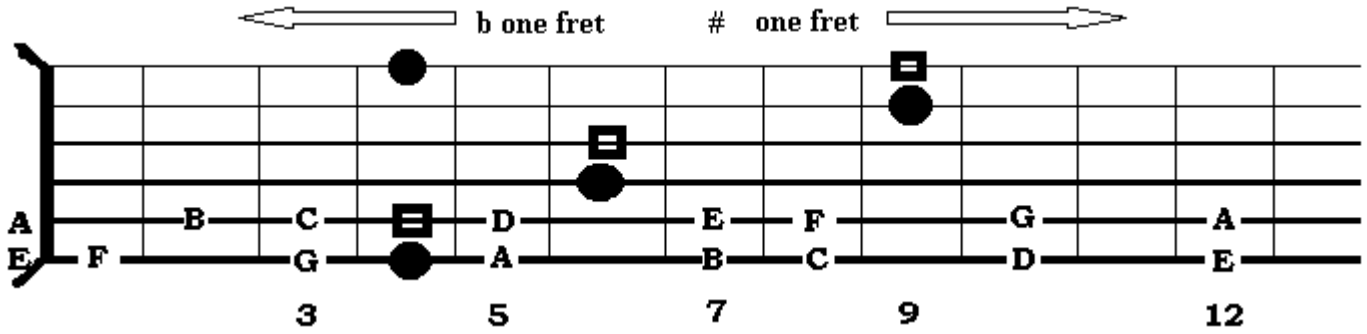


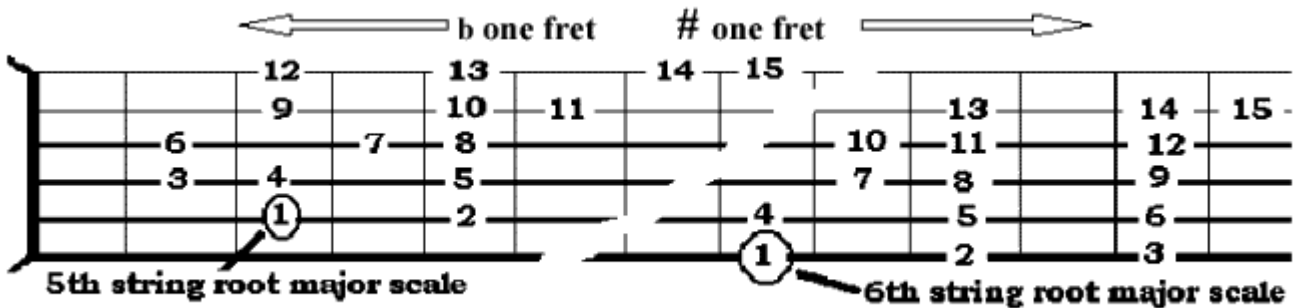
Find the bass note



Interpret the chord quality

Chord name	Possible chord symbol (s)	Possible chord tones: (from major scale built on the root.)
Major 7	maj7, M7, \triangle , maj9, maj7#11, 6/9, add6	1 3 5 7 9 13 #11
Minor 7	min7, m7, -7, min9, m9, -9, -11, min11, m11, m6,	1 b3 5 b7 9 11 13
Minor 7 b5	m7b5, min7 b5,	1 b3 b5 b7 11 (9) (#5)
7th	7, 9, 13	1 3 5 b7 9 13
7 sus	11, 7sus	1 5 b7 9 11 13
Altered dominant	alt., #9b5, b9b5, +7b5,	1 3 #5 b7 b9 #9 (b5)
7 b9	7b9, 13b9	1 3 5 b7 b9 13
11 b9	11b9	1 5 b7 b9 11 (13)
7 #9	#9, 7 #9	1 3 5 b7 #9 (#11) (13)
7 #11	7 #11	1 3 5 b7 9 #11 13
Minor major 7	mM7, m(maj7), -(maj7)	1 b3 5 7 9 13 (11)

Find the chord tones



Other pentatonic scales for soloing

□ = root for minor pentatonic

○ = root for major pentatonic

